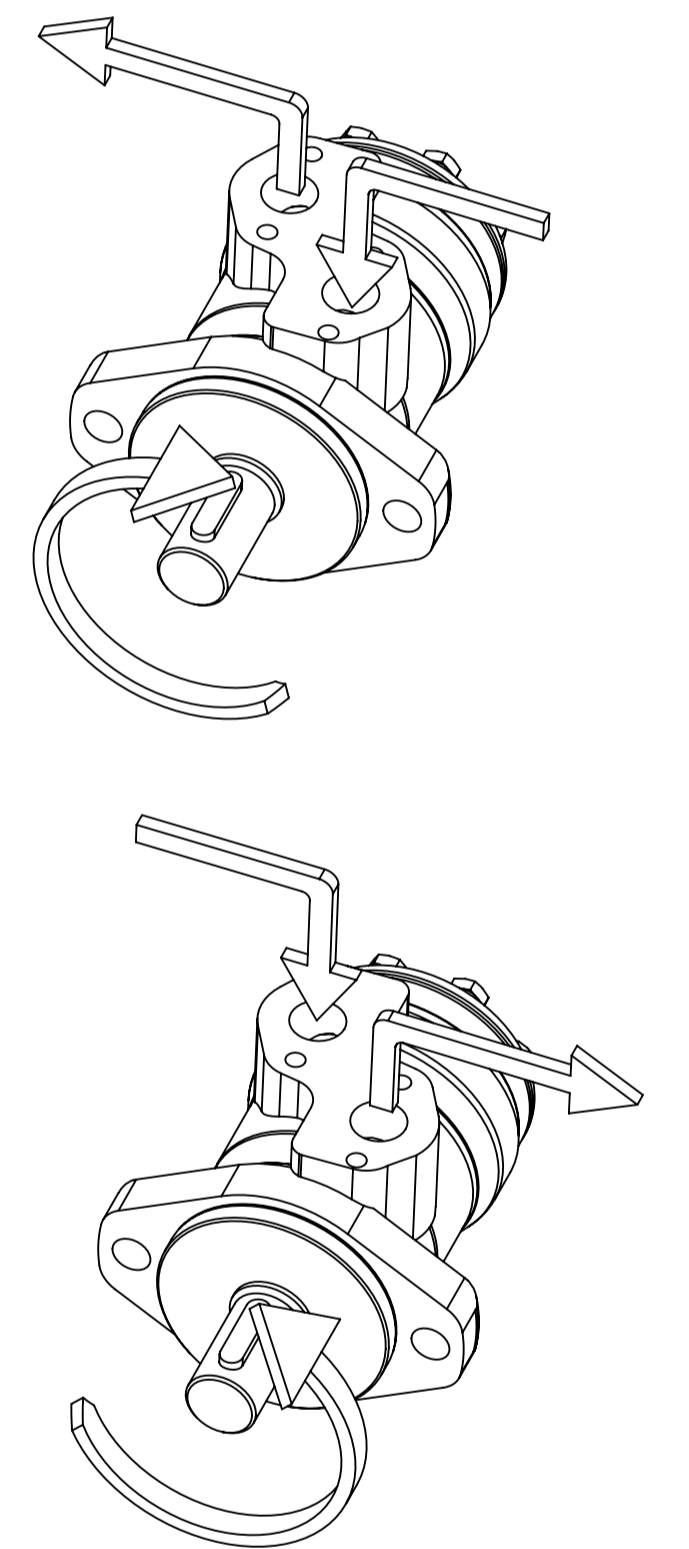
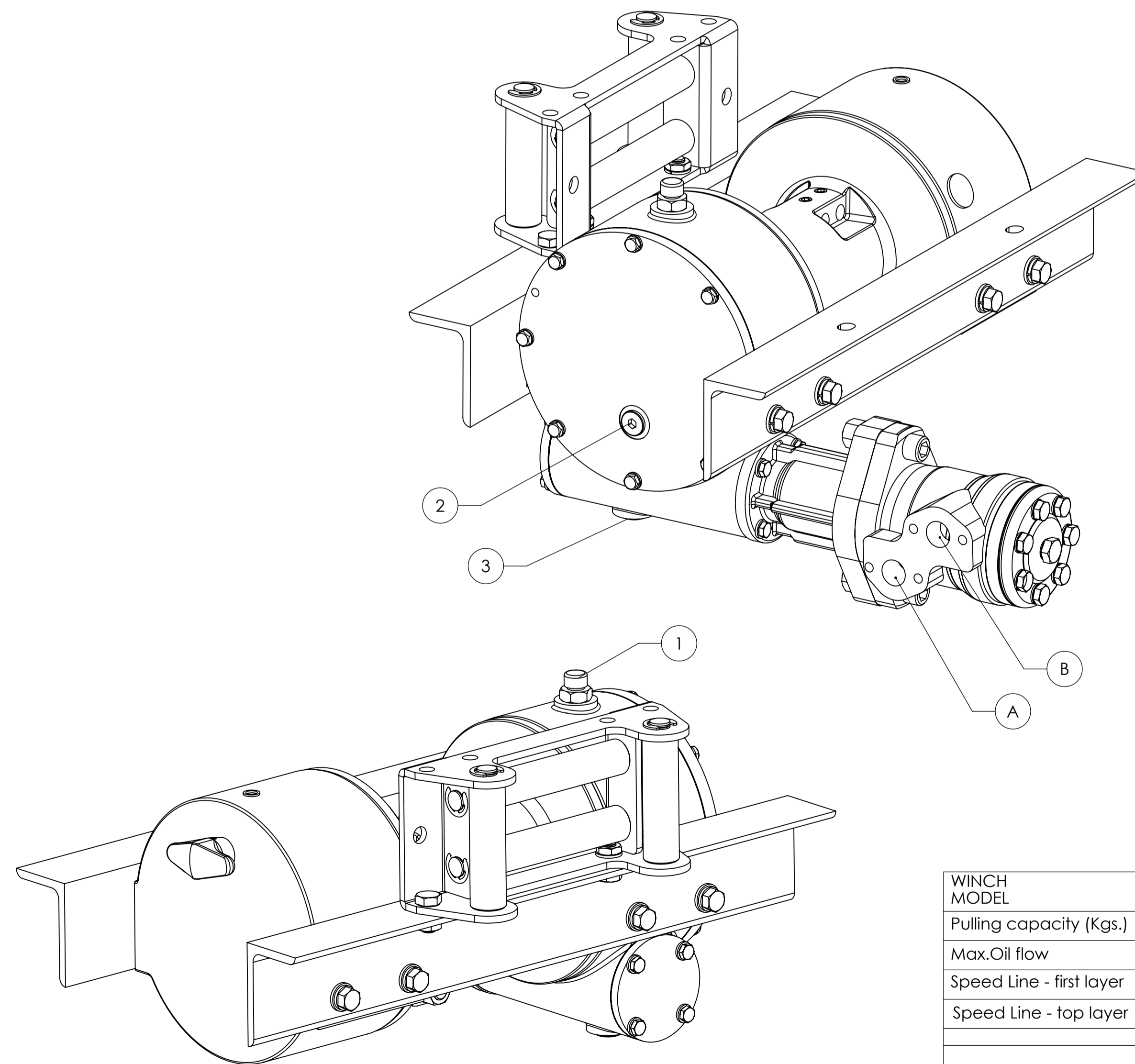
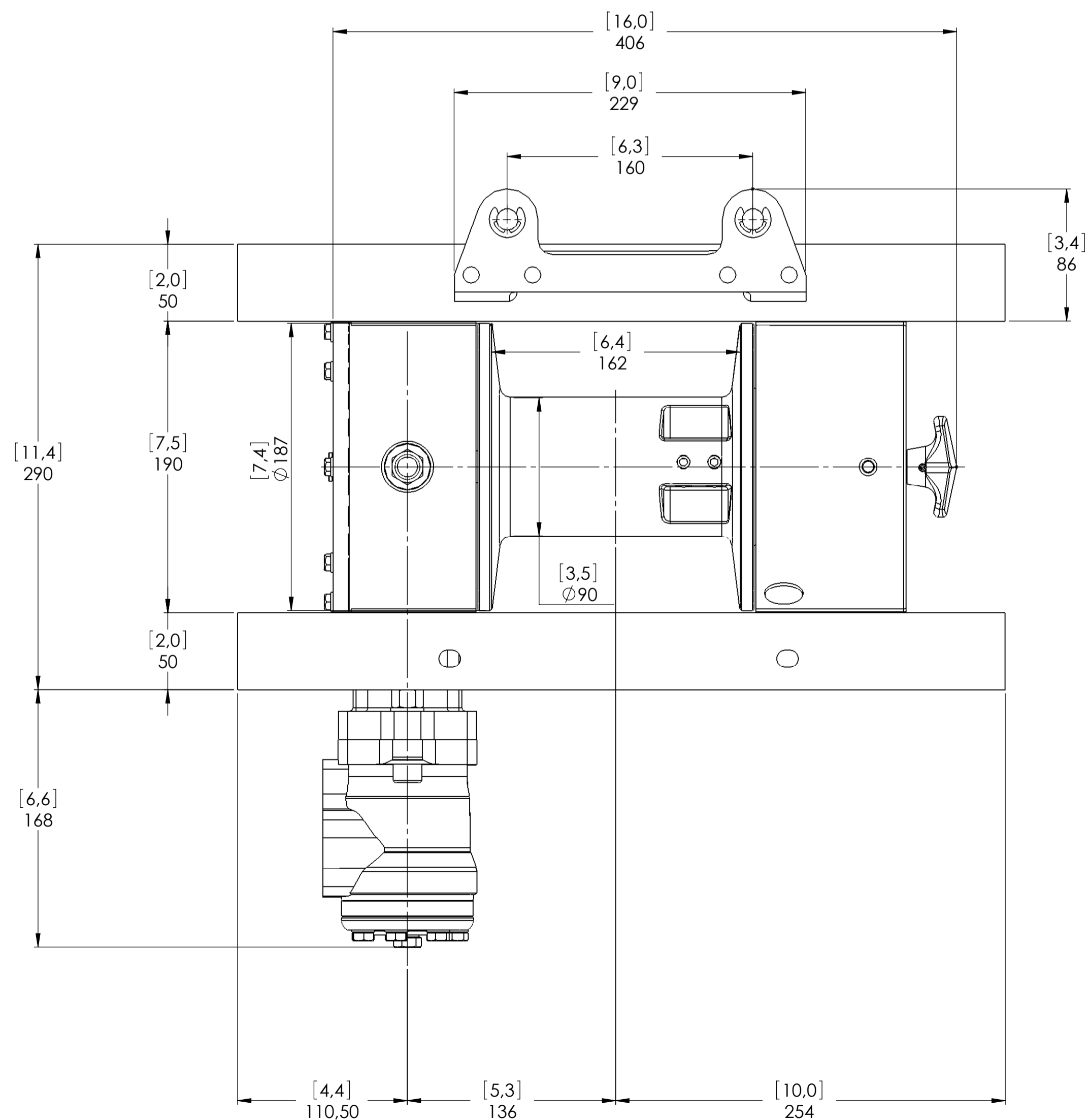
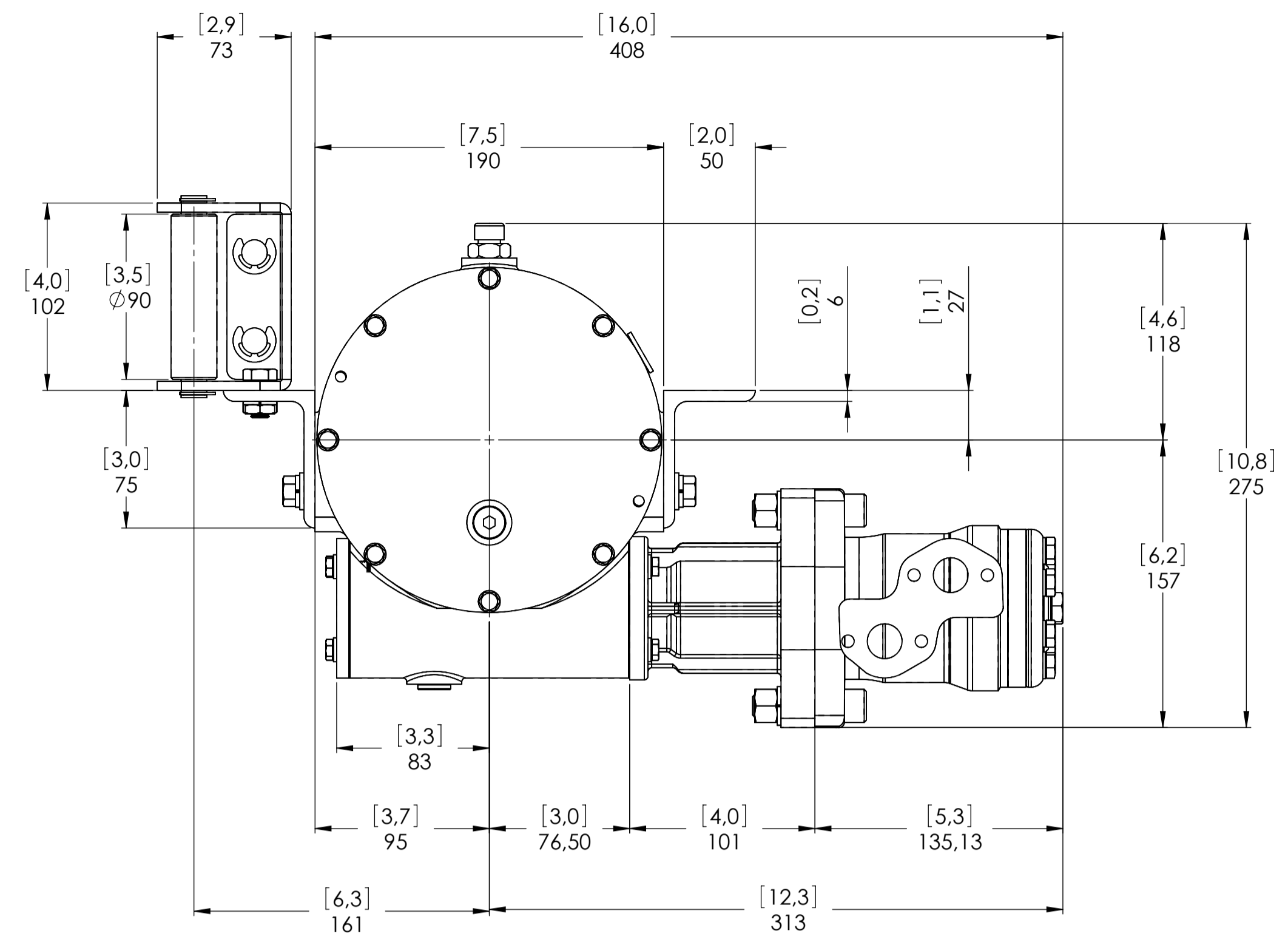
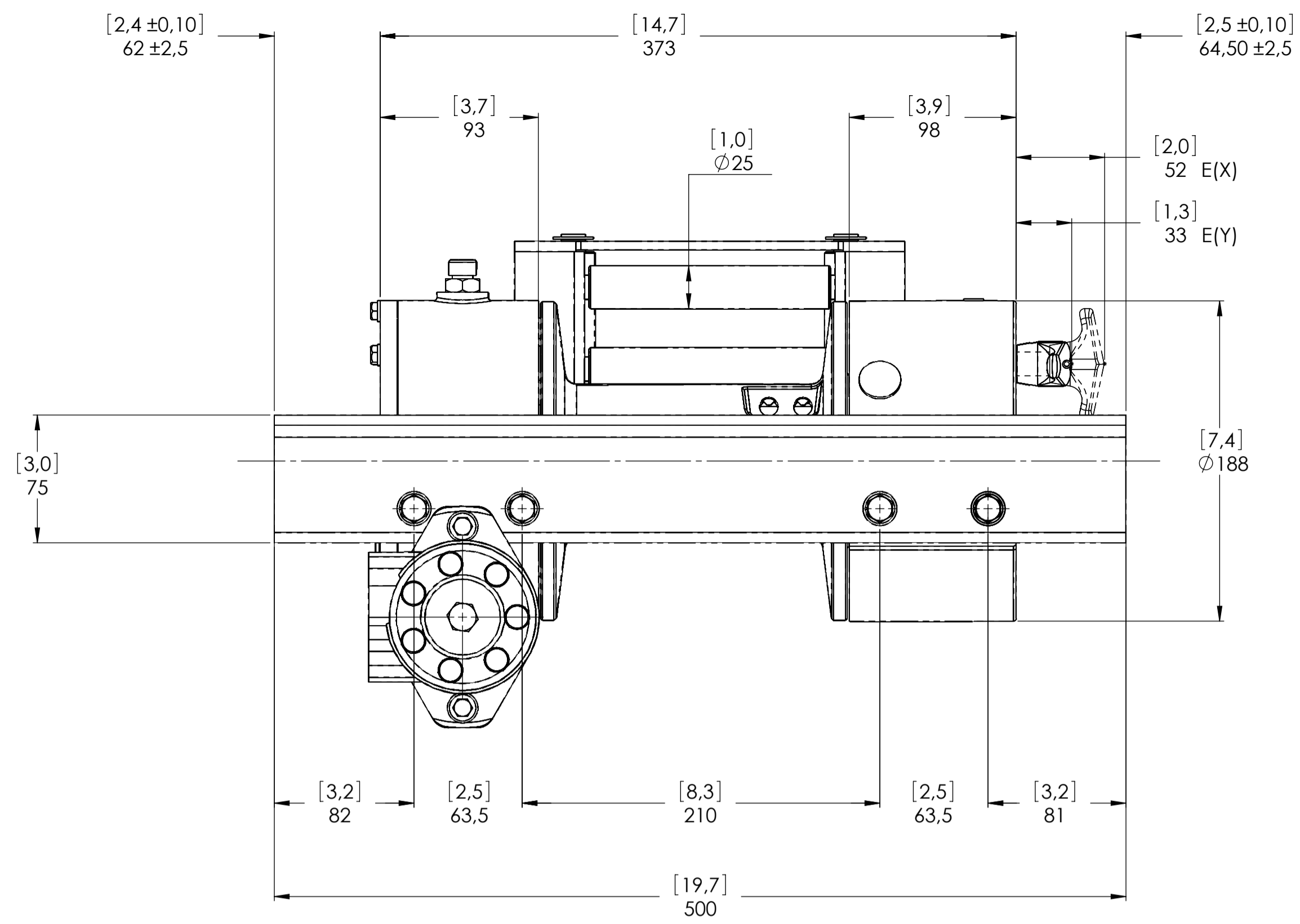
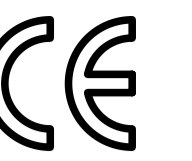


Machinery Directive 2006/42/CE  
EN 14492-1

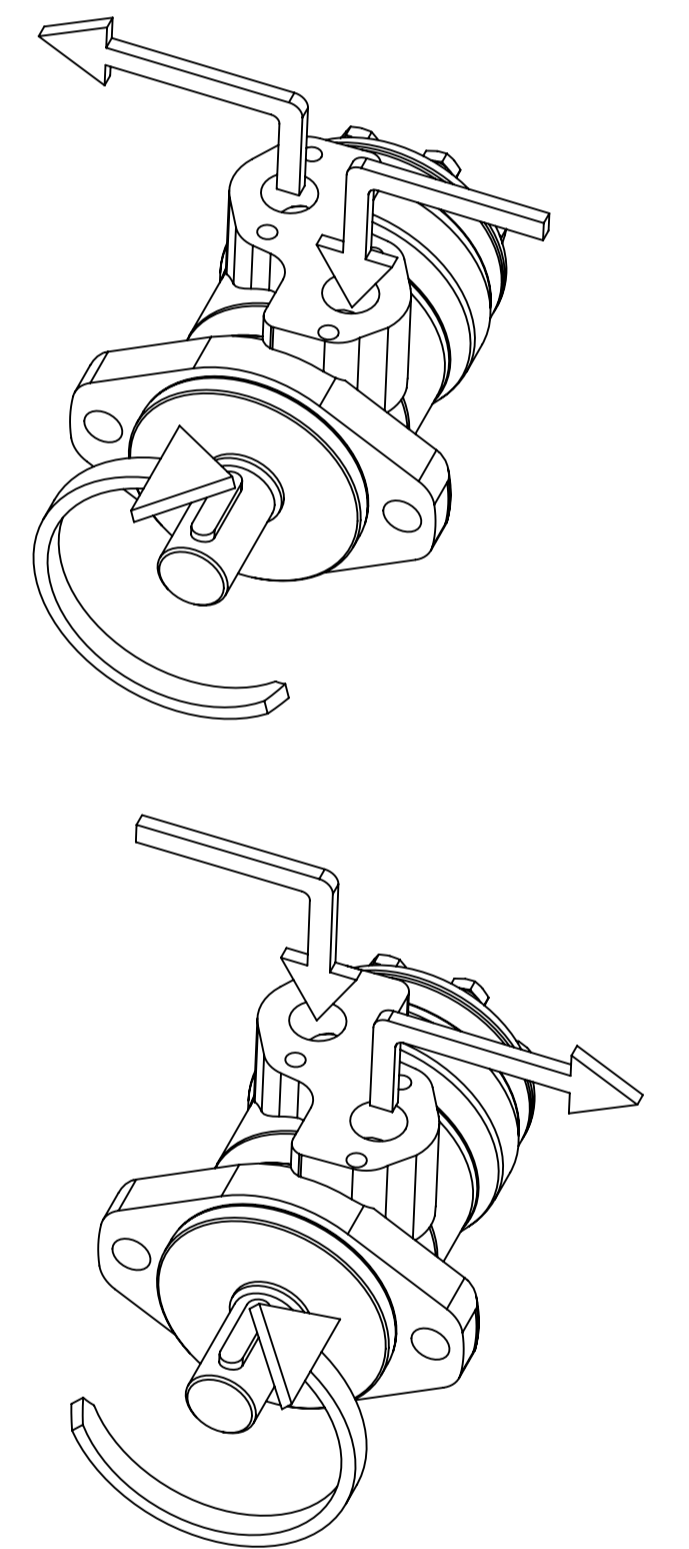
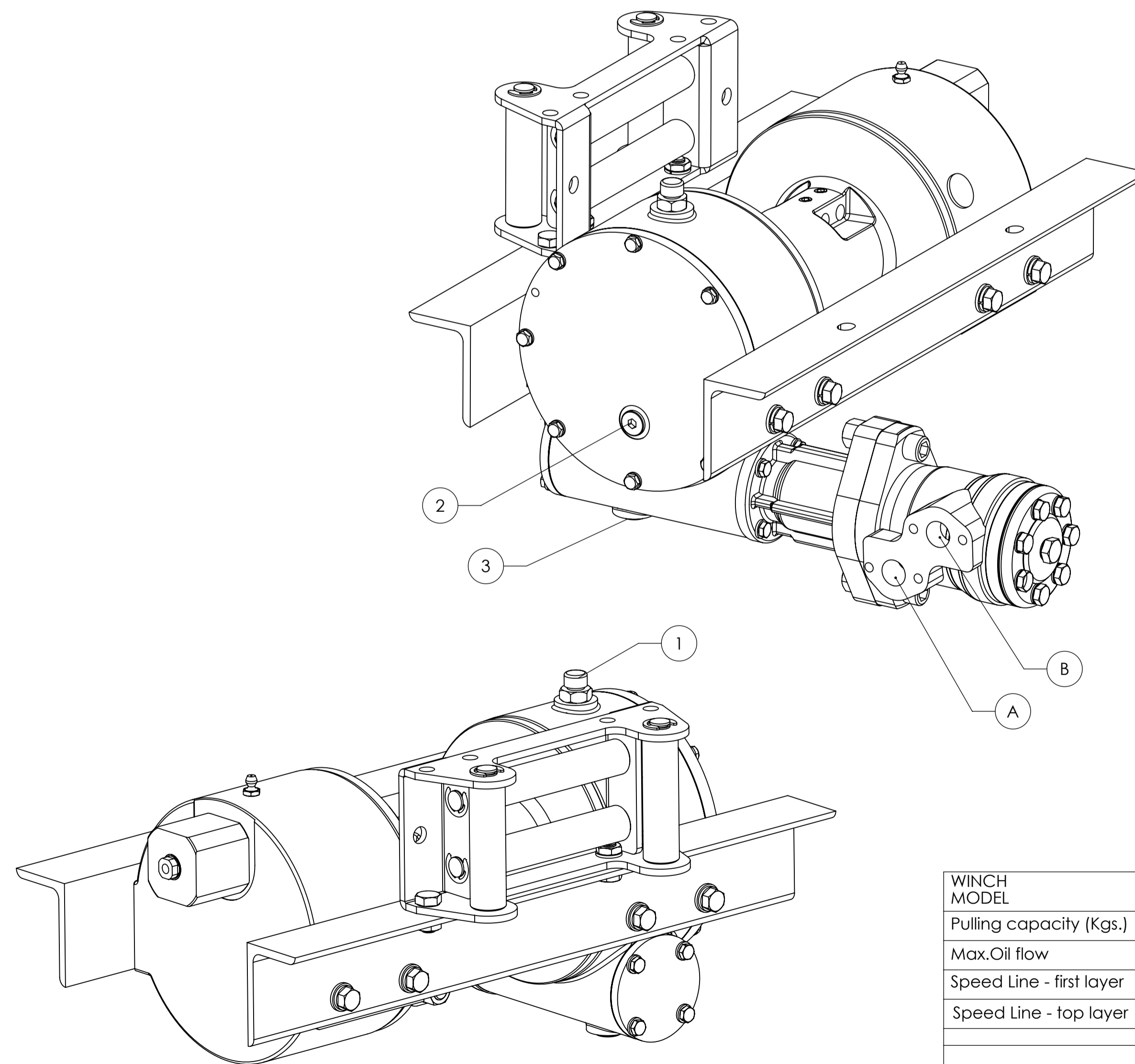
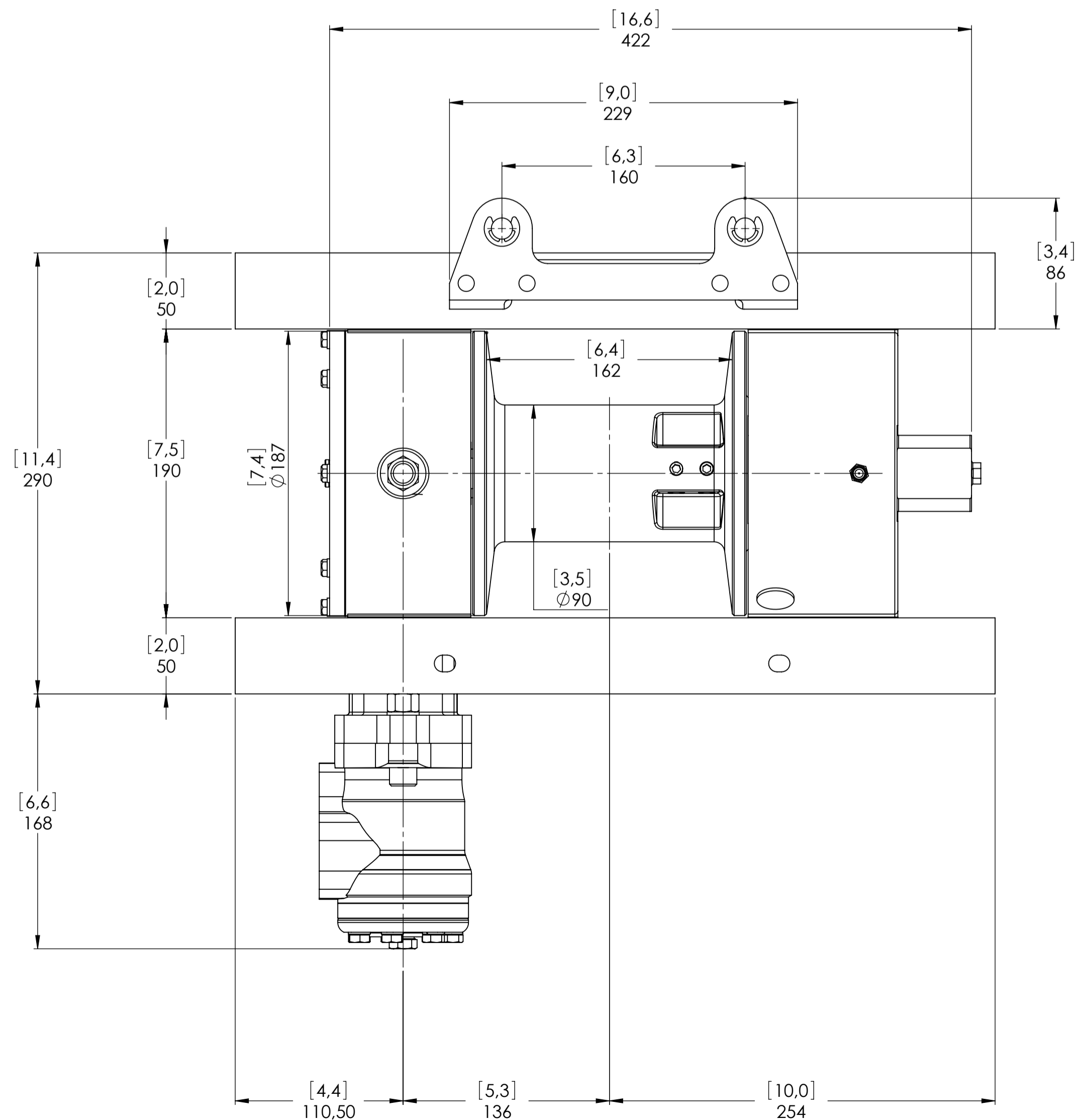
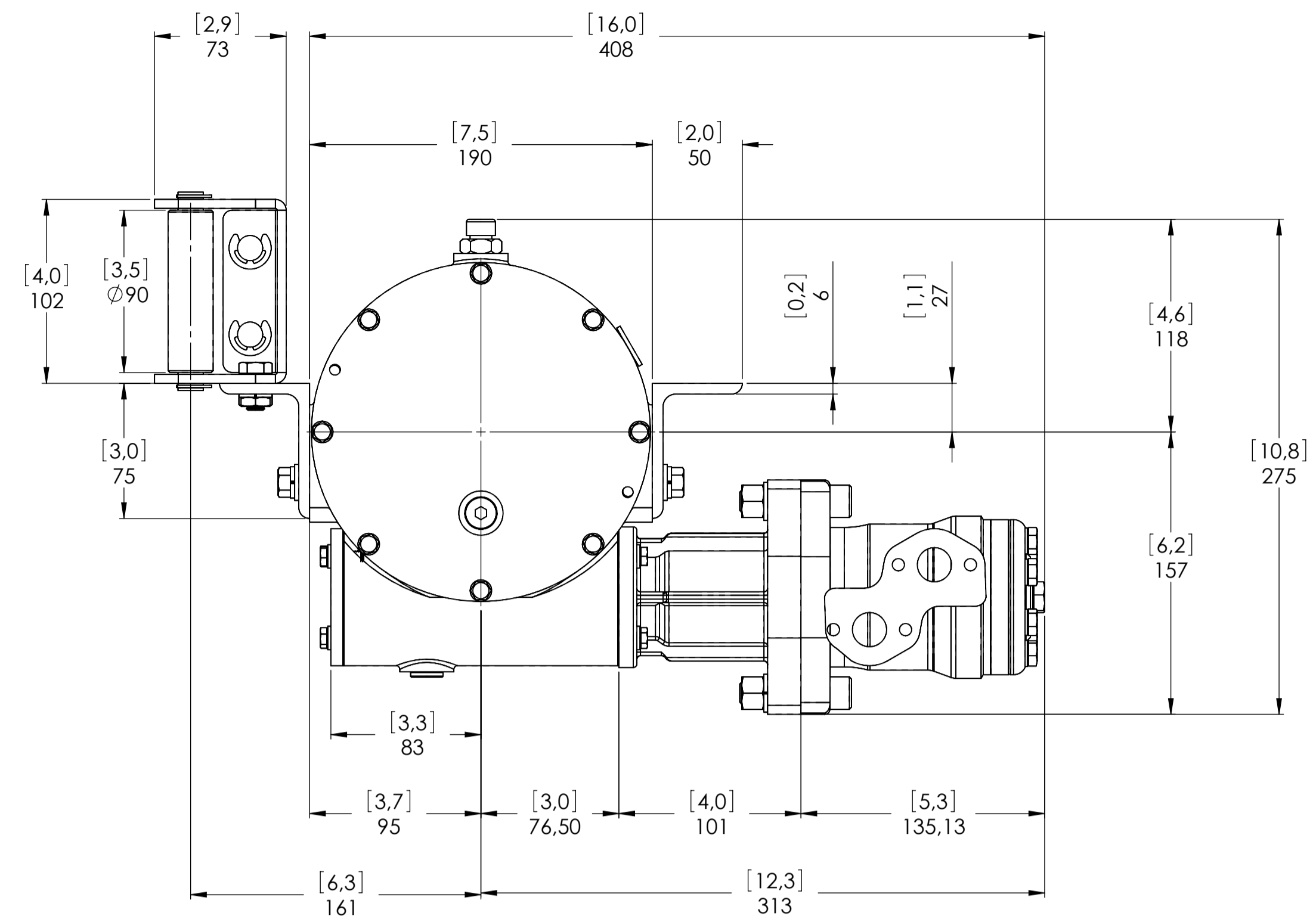
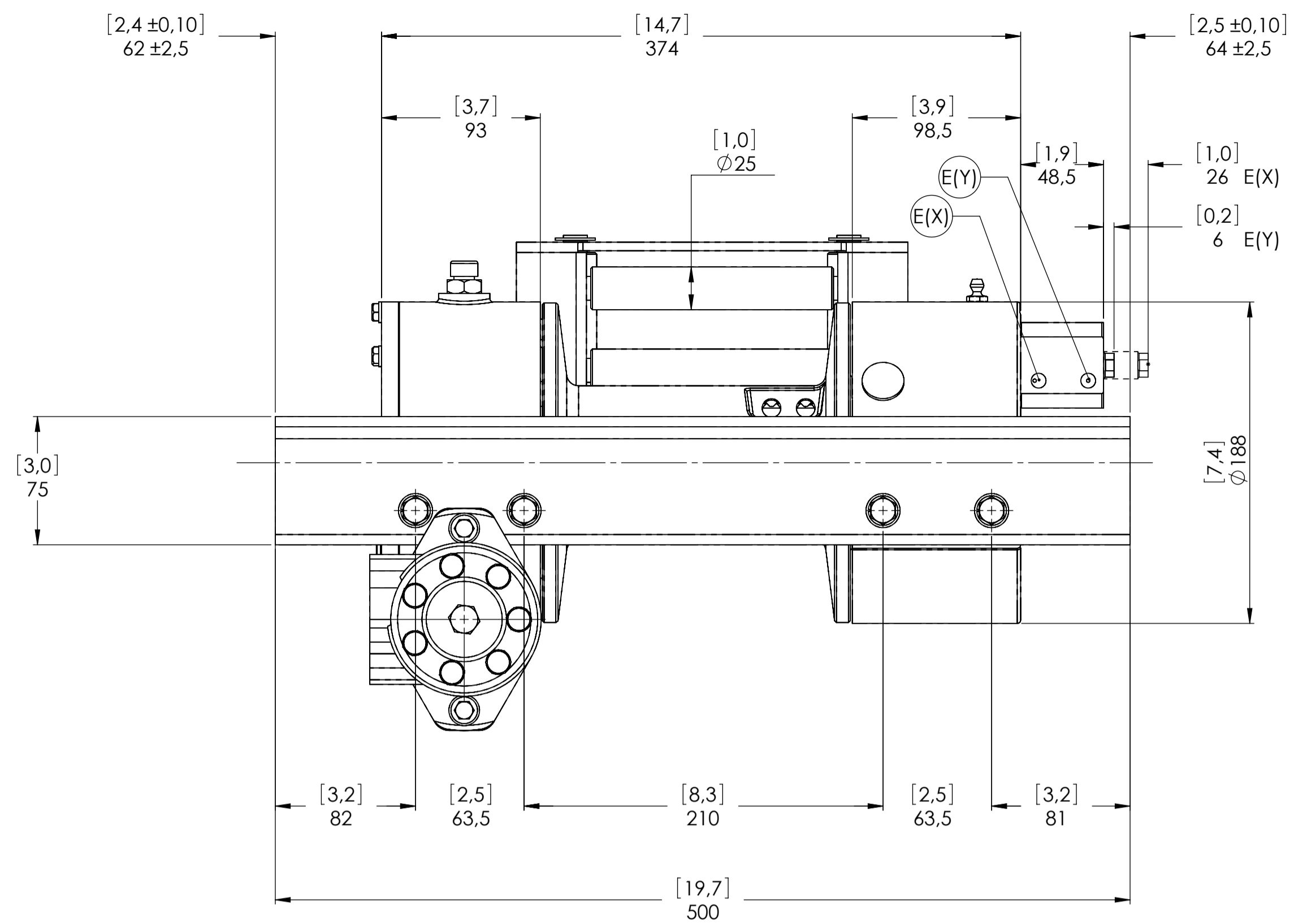



WINCH MODEL	JHC	WINCH GROUP	WORM GEAR	PLUGS
Pulling capacity (Kgs.)	3600	Date	Modification	1.Fill 3/8"G
Max.Oil flow	40 Lt./Min.			2.Level 3/8"G
Speed Line - first layer	3.8 Mt./Min.			3.Drain 3/8"G
Speed Line - top layer	6.9 Mt./Min.	<b>DANGEROUS:</b> Do not use winch to lift support or transport personnel.		SCALE 1:2.5
		Gear ratio	60:1	WEIGHTS
Funo - Bologna (Italy) www.vimeindustrial.com		Orbital hydr. motor	50 cc	Winch (without oil) 30 Kgs.
The Quality is Transparent		Working pressure	130 Bar	Roller fairlead 2.3 Kgs.
		Drum size	162 mm	Heavy-duty roller fairlead ----
		Drum clutch	Manual	Rope tensioner ----
		VIME Industrial : reserves the right to improve its products through changes in designed or materials as it may seem desiderable without notice		CODE JHC36D50G
		DATA 09/11/2010		

CONNECTIONS	
A	1/2"G
B	1/2"G
E (X) DISENGAGED	----
E (Y) ENGAGED	----

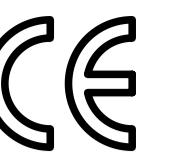


Machinery Directive 2006/42/CE  
EN 14492-1

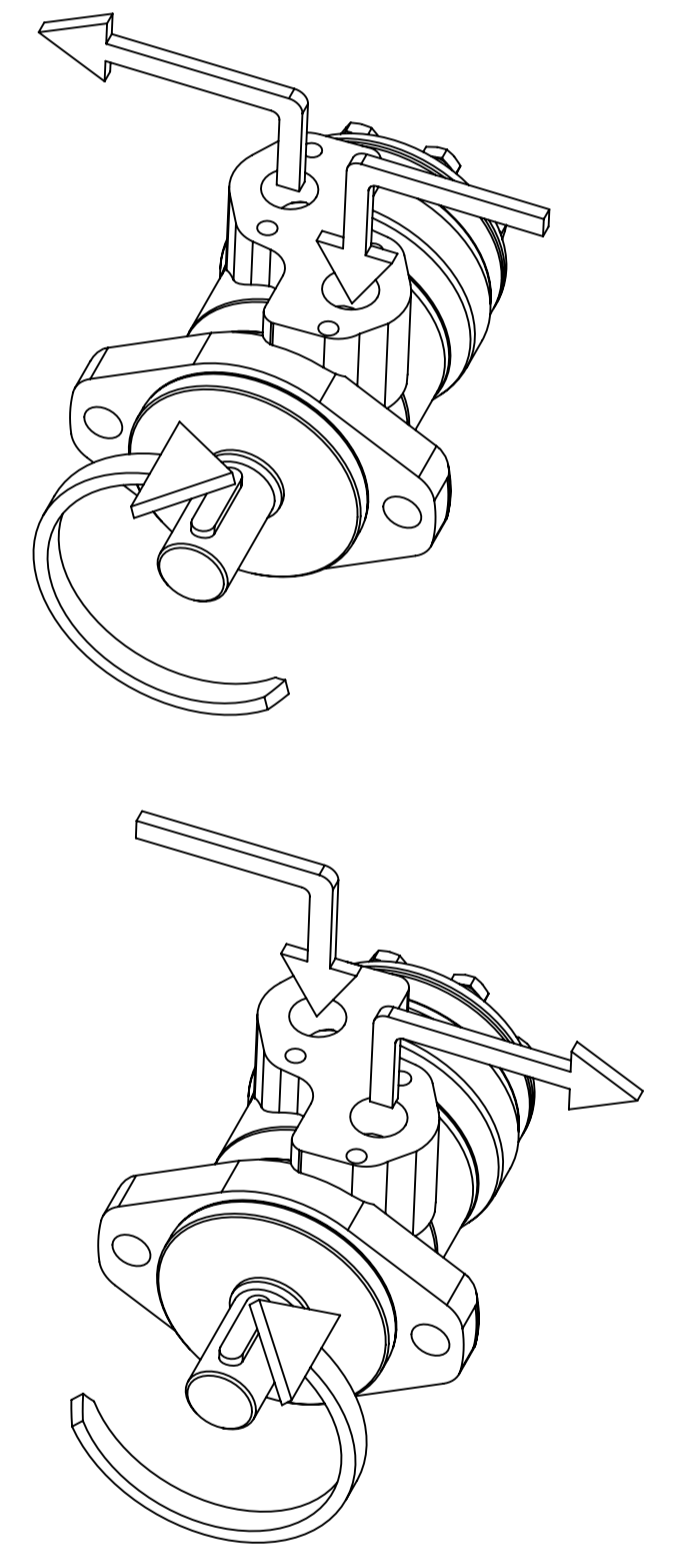
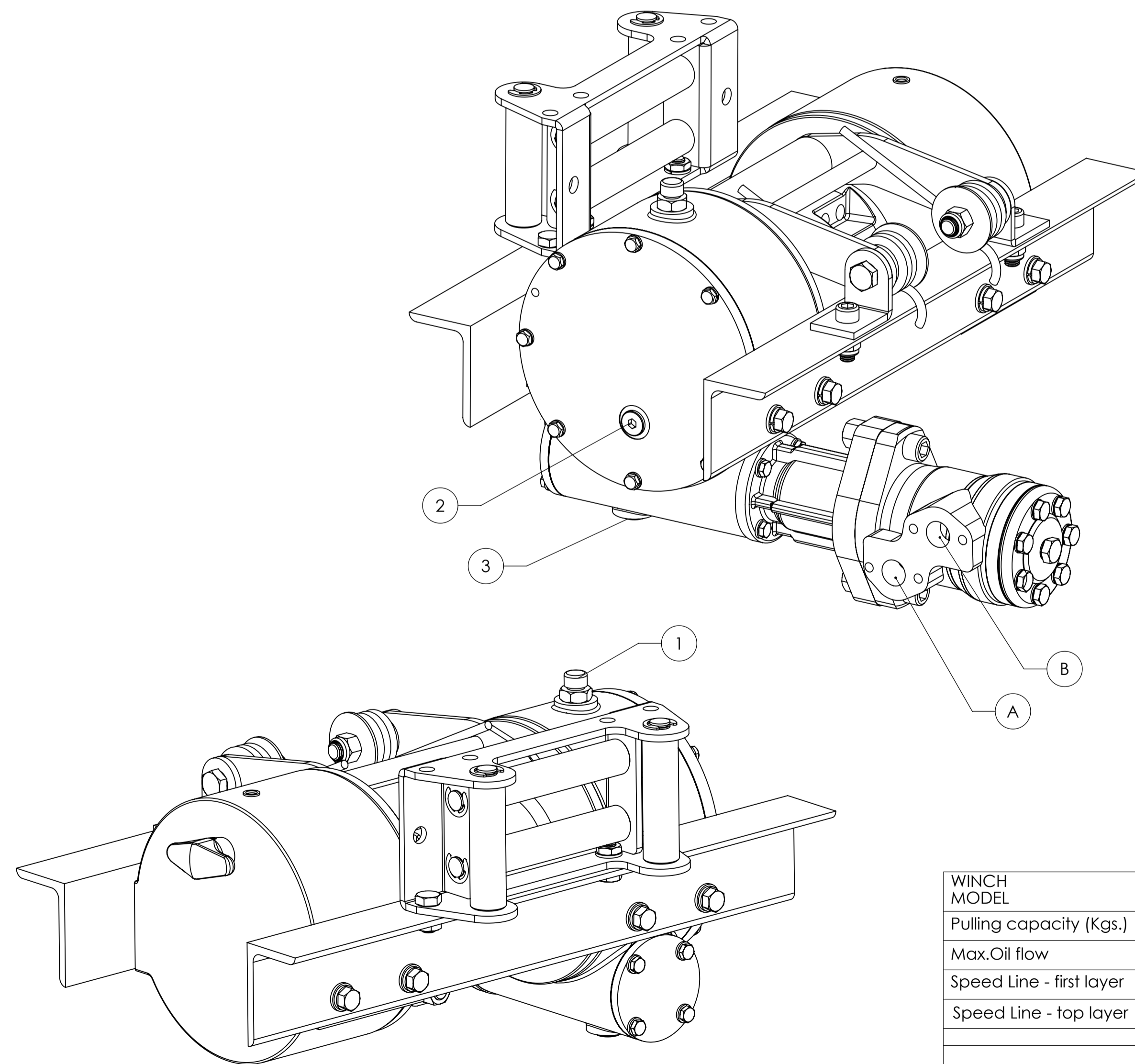
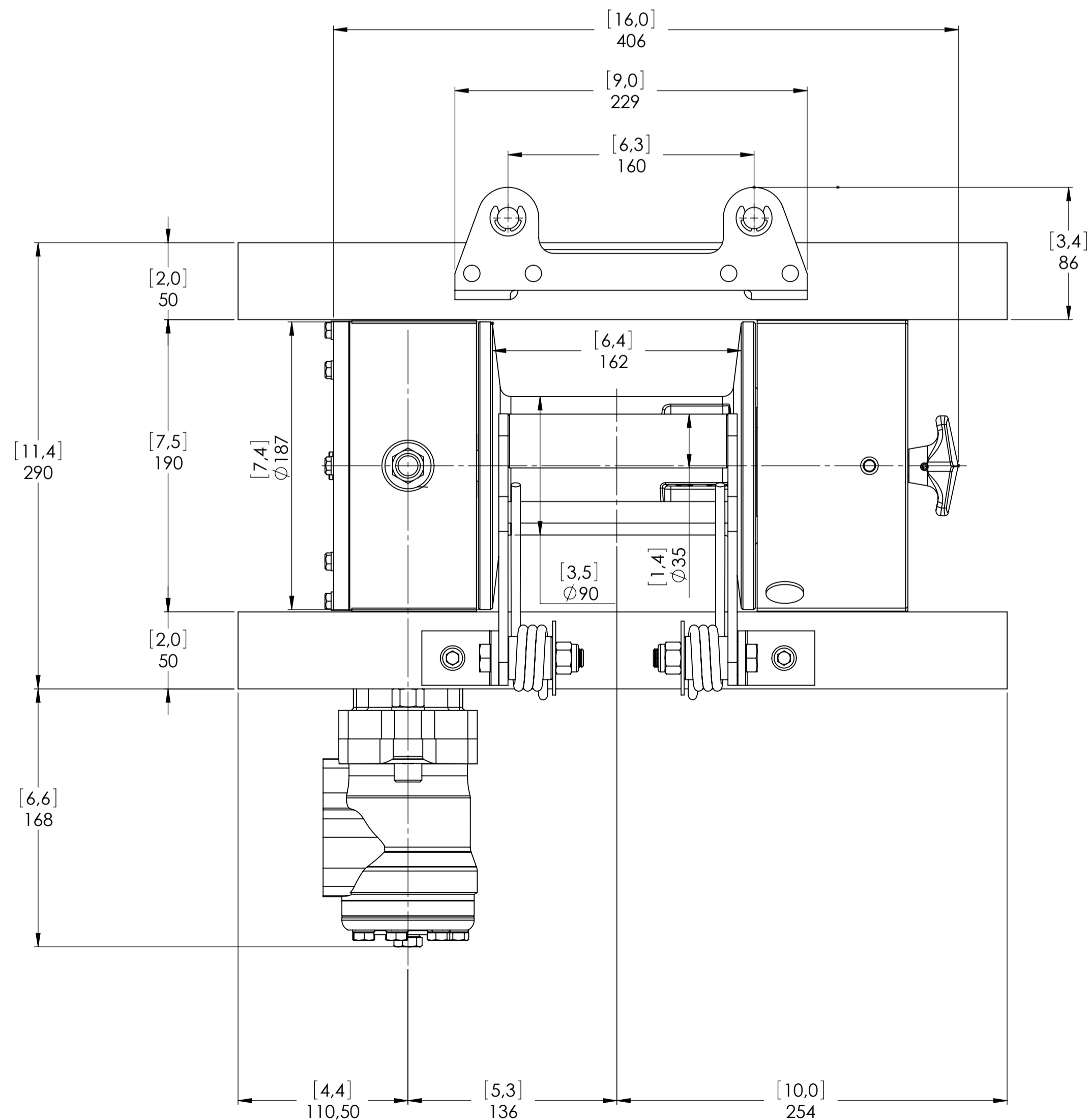
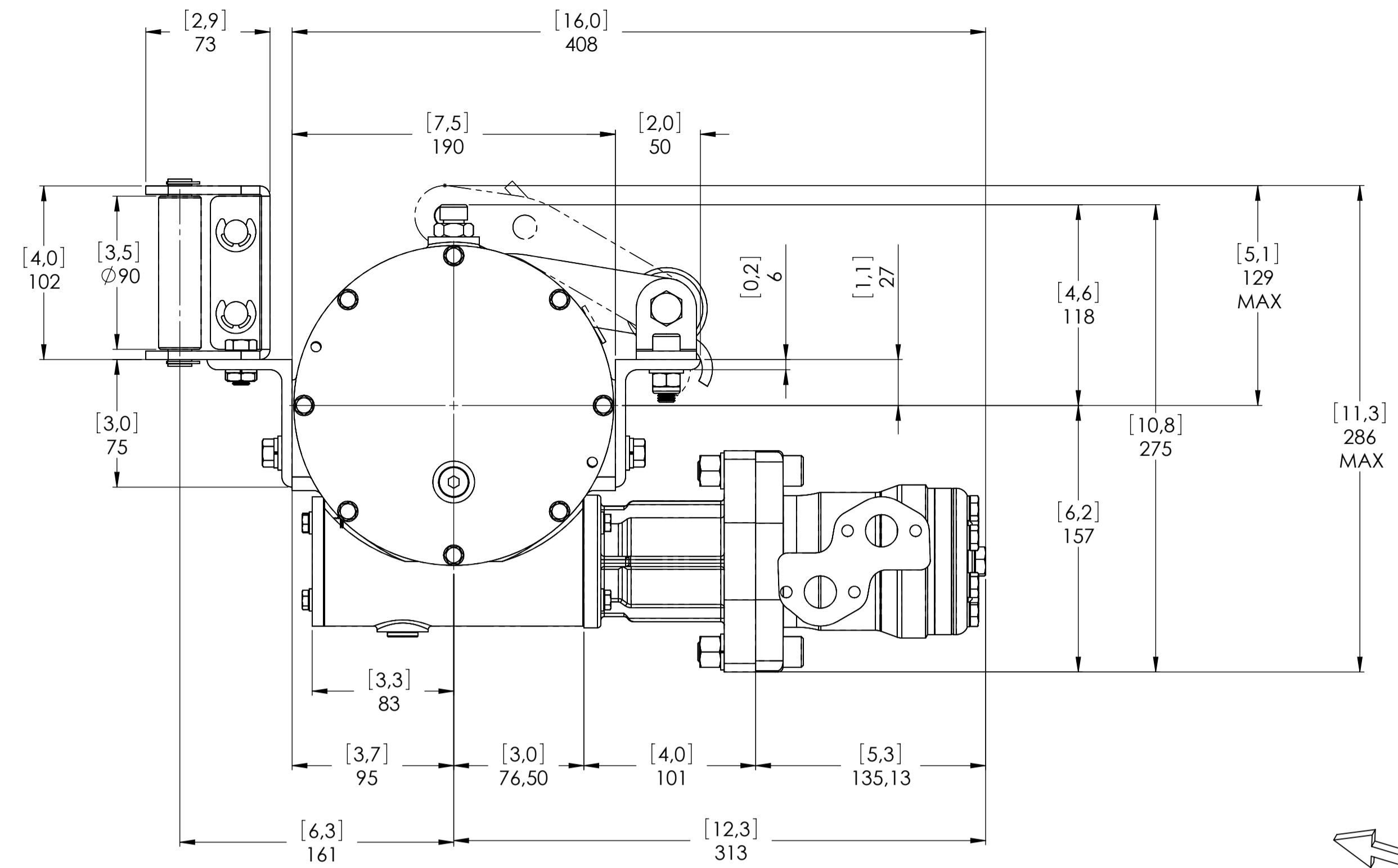
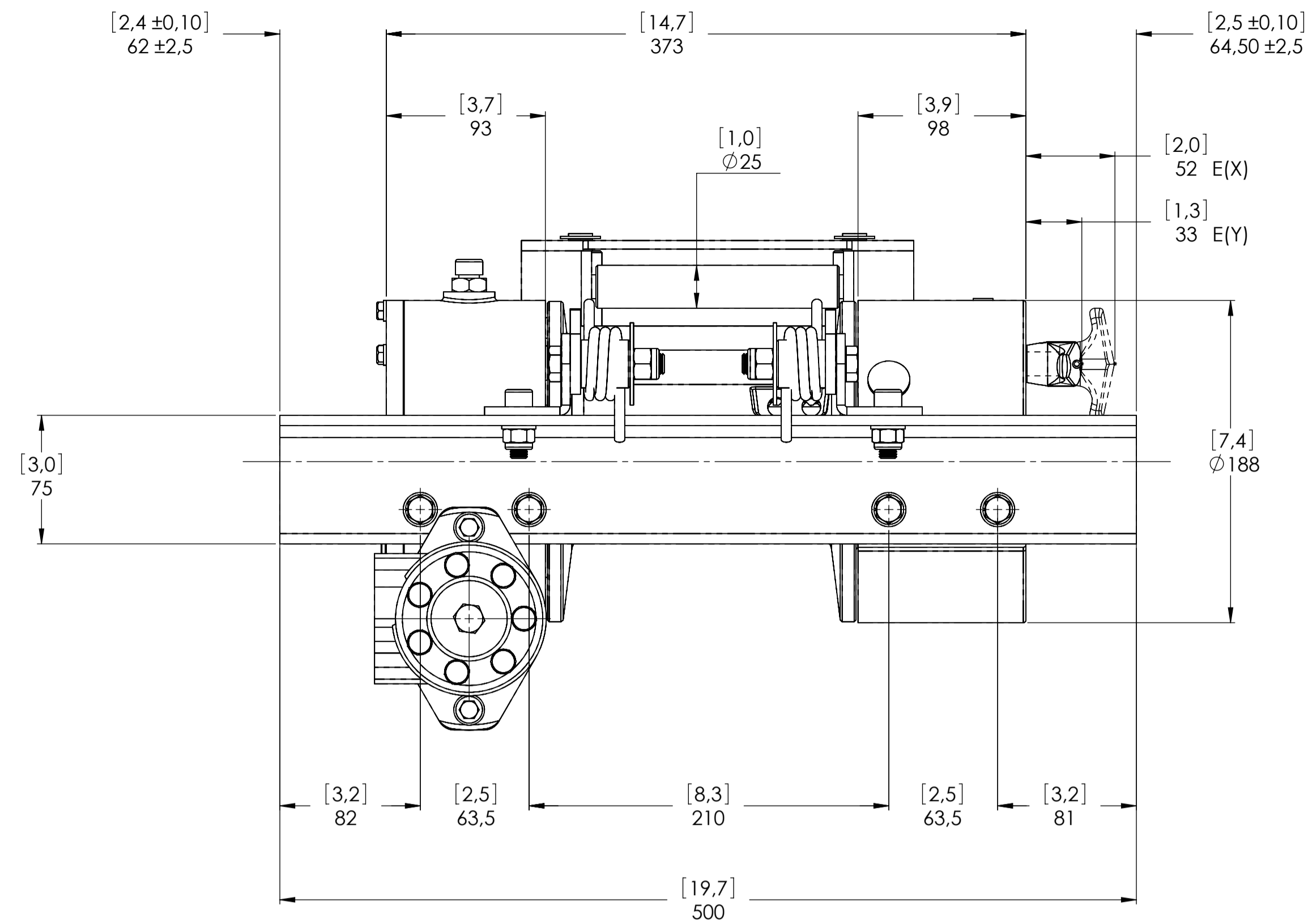


WINCH MODEL		JHC	WINCH GROUP	WORM GEAR	PLUGS	
Pulling capacity (Kgs.)	3600	Date	Modification	1.Fill	3/8" G	
Max.Oil flow	40 Lt./Min.			2.Level	3/8" G	
Speed Line - first layer	3.8 Mt./Min.			3.Drain	3/8" G	
Speed Line - top layer	6.9 Mt./Min.	<b>DANGEROUS:</b> Do not use winch to lift support or transport personnel.			SCALE	1:2.5
 Funo - Bologna (Italy) www.vimeindustrial.com		Gear ratio	60:1	WEIGHTS		
		Orbital hydr. motor	50 cc	Winch (without oil) 30 Kgs.		
		Working pressure	130 Bar	Roller fairlead 2.3 Kgs.		
		Drum size	162 mm	Heavy-duty roller fairlead -----		
		Drum clutch	Air-operated	Rope tensioner ----		
The Quality is Transparent		VIME Industrial reserves the right to improve its products through changes in designed or materials as it may seem desirable without notice		DATA	CODE JHC36D50AG	
				9/11/2010		

CONNECTIONS	
A	1/2" G
B	1/2" G
E (X) DISENAGED	1/8" G
E (Y) ENGAGED	1/8" G

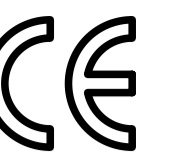


Machinery Directive 2006/42/CE  
EN 14492-1

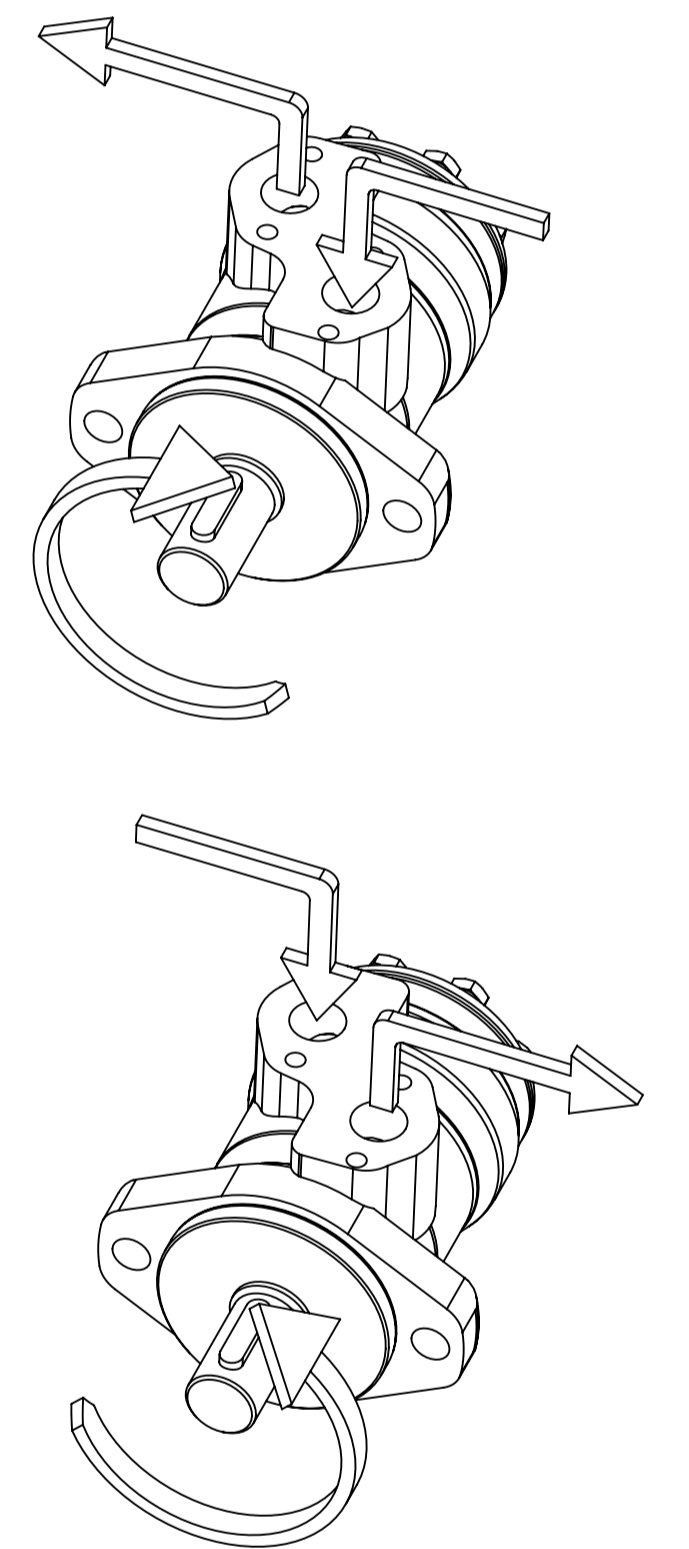
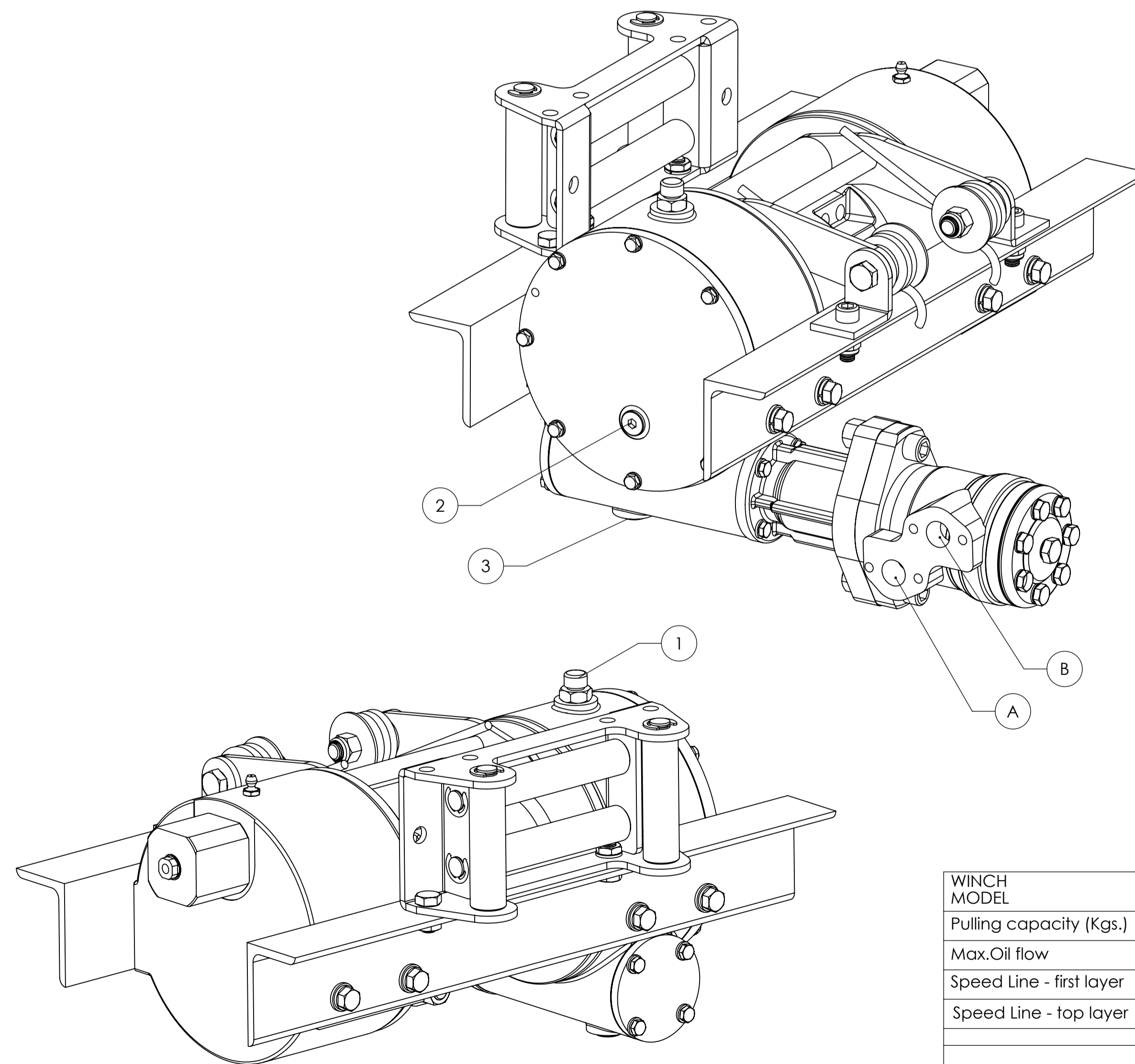
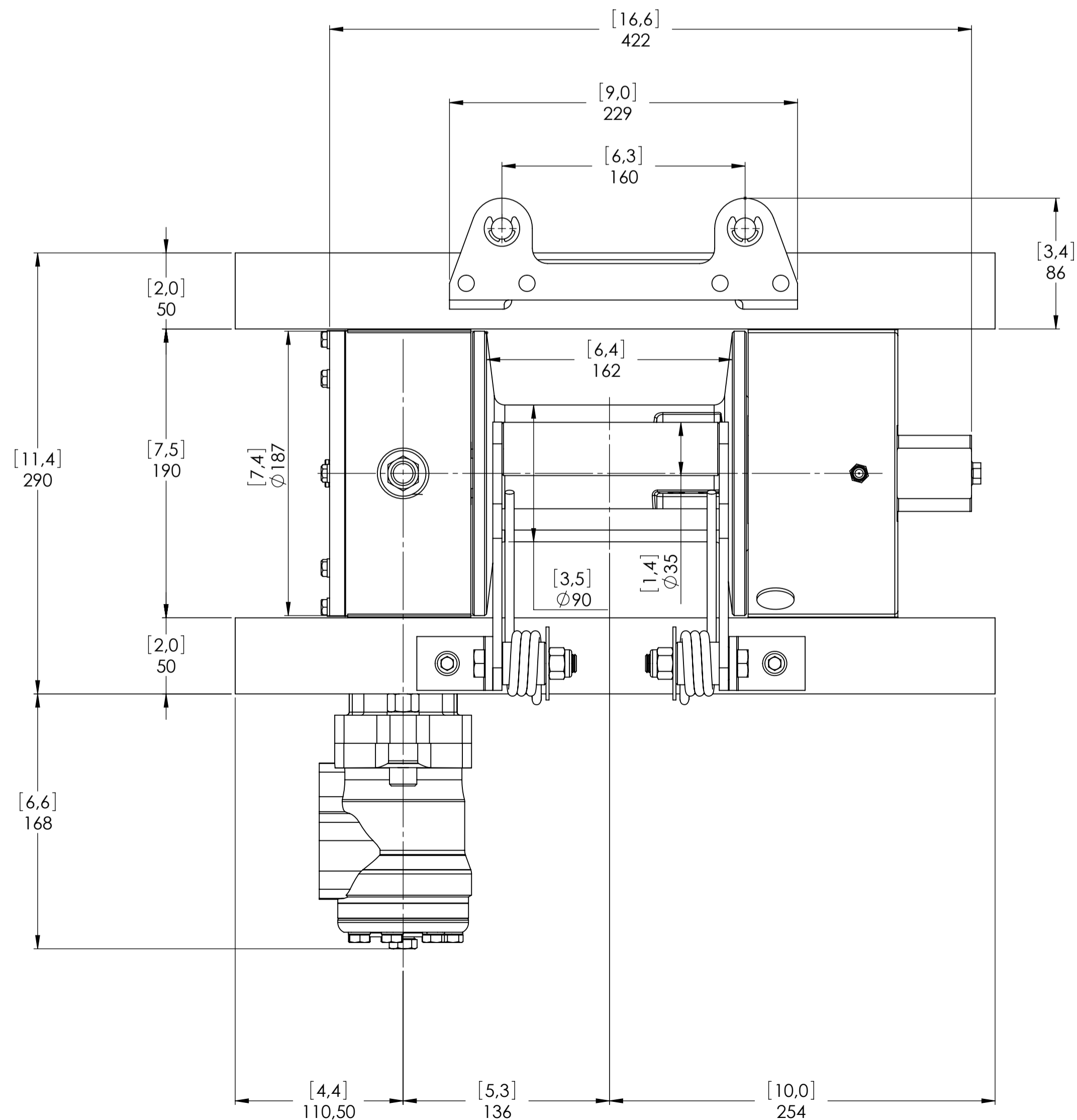
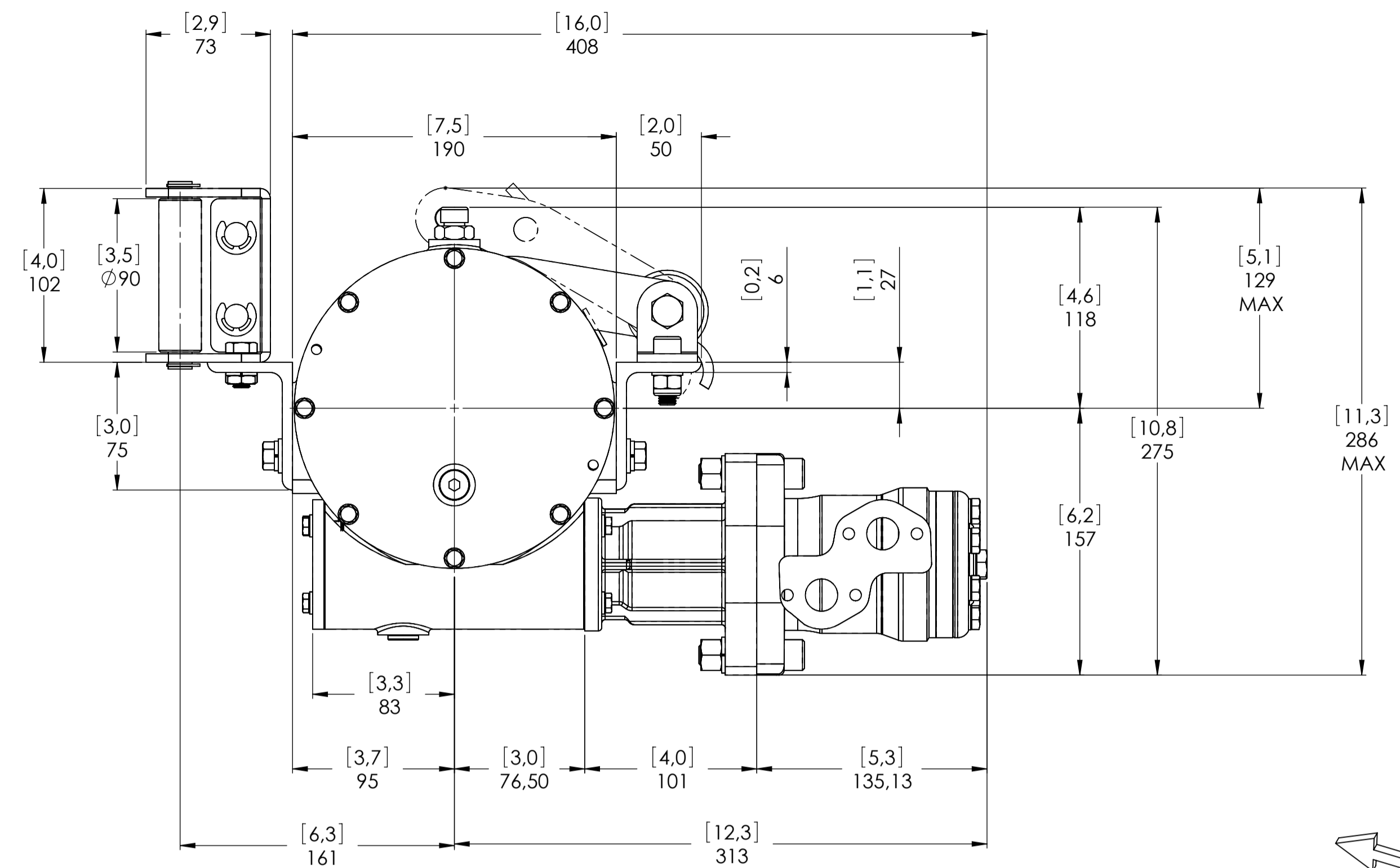
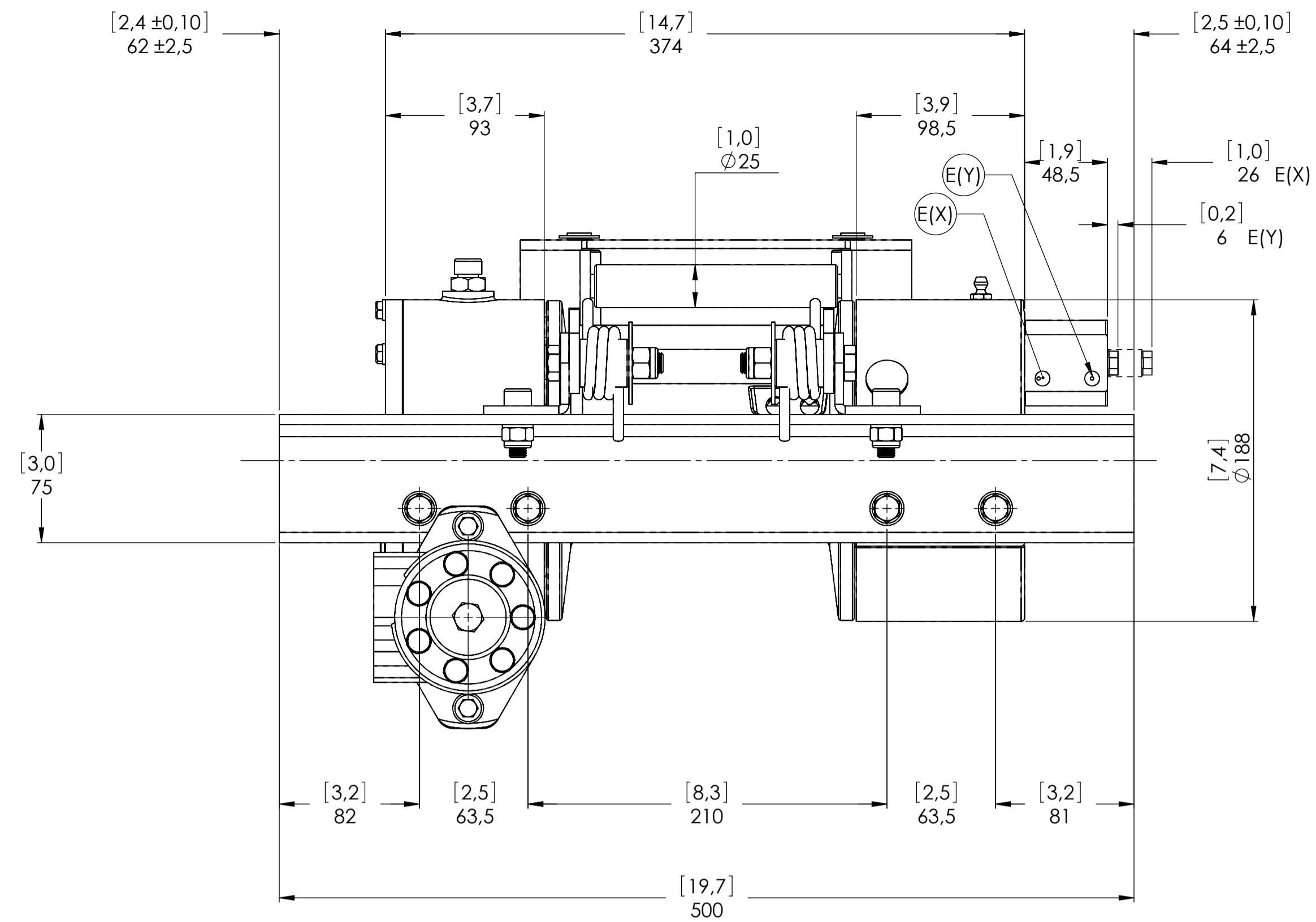



WINCH MODEL	JHC	WINCH GROUP	WORM GEAR	PLUGS
Pulling capacity (Kgs.)	3600	Date	Modification	1.Fill 3/8"G
Max.Oil flow	40 Lt./Min.			2.Level 3/8"G
Speed Line - first layer	3.8 Mt./Min.			3.Drain 3/8"G
Speed Line - top layer	6,9 Mt./Min.	<b>DANGEROUS:</b> Do not use winch to lift support or transport personnel.		SCALE 1:2.5
		Gear ratio	60:1	WEIGHTS
Funo - Bologna (Italy) www.vimeindustrial.com		Orbital hydr. motor	50 cc	Winch (without oil) 30 Kgs.
The Quality is Transparent		Working pressure	130 Bar	Roller fairlead 2.3 Kgs.
		Drum size	162 mm	Heavy-duty roller fairlead -----
		Drum clutch	Manual	Rope tensioner 1.8 Kgs.
		VIME Industrial : reserves the right to improve its products through changes in designed or materials as if may seem desiderable without notice		CODE JHC36D50GP
		DATA 09/11/2010		

CONNECTIONS	
A	1/2"G
B	1/2"G
E (X) DISENGAGED	-----
E (Y) ENGAGED	-----



Machinery Directive 2006/42/CE  
EN 14492-1



WINCH MODEL		JHC	WINCH GROUP	WORM GEAR	PLUGS
Pulling capacity (Kgs.)	3600		Date	Modification	1.Fill 3/8"G
Max.Oil flow	40 Lt./Min.				2.Level 3/8"G
Speed Line - first layer	3.8 Mt./Min.				3.Drain 3/8"G
Speed Line - top layer	6,9 Mt./Min.				
<b>DANGEROUS:</b> Do not use winch to lift support or transport personnel.					SCALE 1:2.5
					WEIGHTS
					Winch (without oil) 30 Kgs.
Funo - Bologna (Italy) www.vimeindustrial.com					Roller fairlead 2.3 Kgs.
The Quality is Transparent					Heavy-duty roller fairlead -----
Gear ratio 60:1 Orbital hydr. motor 50 cc Working pressure 130 Bar Drum size 162 mm Drum clutch Air-operated					Rope tensioner 1.8 Kgs.
<b>VIME Industrial</b> reserves the right to improve its products through changes in designed or materials as it may seem desirable without notice.					CODE JHC36D50AGP
					DATE 9/11/2010

CONNECTIONS

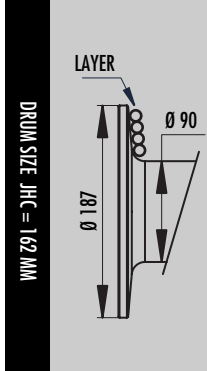
A	1/2"G
B	1/2"G
E (X) DISENAGED	1/8"G
E (Y) ENGAGED	1/8"G

## 1.4.5 JHC 3600 WINCH TECHNICAL DATA

RATIO	WIRE ROPE SIZE [MM]	LAYER	LINE PULL [KGS]
60:1	10*	1	3.600
		2	3.000
		3	2.570
		4	2.250
		5	2.000

OIL SUPPLY [LT/MIN]	DRUM REVOLUTION [RPM]	LINE SPEED [MT/MIN]				
		1	2	3	4	5
20	5,1	1,6	1,9	2,2	2,6	2,9
30	9,2	2,9	3,5	4,0	4,6	5,2
40	12,2	3,8	4,6	5,4	6,1	6,9

WIRE ROPE MIN. BREAKING LOAD EN 14492-1 [KGS]	7.200
---	-------



LAYER	DRUM DIAMETER [MM]		WIRE ROPE ON LAYER [MT]		WIRE ROPE QUANTITY [MT]	
	00 MM	10 MM	00 MM	10 MM	00 MM	10 MM
	5	-	180	-	8,6	-
4	-	160	-	7,6	-	24,8
3	-	140	-	6,7	-	17,2
2	-	120	-	5,7	-	10,5
1	-	100	-	4,8	-	4,8
0	-	90	-	-	-	-

WIRE ROPE CAPACITY [MT]		MAX. WIRE ROPE CAPACITY EN 14492-1 [MT]		MAX. WIRE ROPE CAPACITY [MT]	
00 MM	10 MM	00 MM	00 MM	00 MM	10 MM
-	25	-	24**	-	33

DESCRIPTION	WEIGHT
	[KGS]
WINCH (WITHOUT CABLE)	30
ACCESSORY : ROLLERFAILREAD	2,3
ACCESSORY : CABLE TENSIONER	1,8

### NOTES

Specifications are subject to change without notification and without incurring obligation. Specifications in this publication are theoretical and may vary depending on hydraulic system, environment, etc.

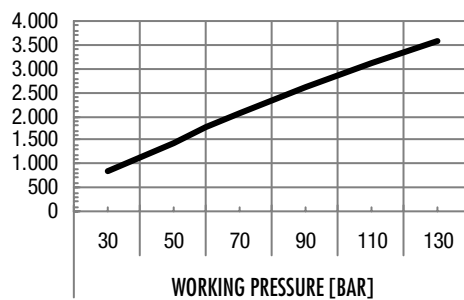
### NOTES

\*Wire rope size must be respected. Recommended wire rope min. tensile strength 2160 N/mm<sup>2</sup>.  
Wire rope minimum breaking load must be at least double of winch max. pulling capacity.

\*\* Max. wire rope capacity according with EN 14492-1.

## 1.4.6 JHC 3600 WINCH PERFORMANCE CHARTS AT THE 1<sup>ST</sup> LAYER

LINE PULL-FIRST LAYER [KGS]



LINE SPEED [MT/MIN]

